

ODOT PROFILOGRAPH MACHINE CERTIFICATION

Date: November 30, 2021

Company or Residency: Emery Sapp & Sons Inc

Operator Name: Hyle Frye

Operator Email: Hyle.frye @ emerysapp.com
(For future notifications)

Supervisor Name: Chip Jones

Supervisor Email: Chip.Jones @ emerysapp.com
(For future notifications)

Machine Manufacturer and Type SSI Mid-Mount Highspeed

Machine Serial Number 2-401

Butterworth Filter 11.0

Run 1 31.90
Run 2 31.90
Run 3 32.20

RESULT

Run 1 63.20
Run 2 62.60
Run 3 62.70

Trace No. 1 (East Bound) 32.00

Trace No. 2 (West Bound) 62.83

Evaluator Signature _____

Machine Ordinal _____

Data File: 20230706_EB_Truck_Run 1.rsd

Stations: Run 1 - 0+00.00 to 5+28.58
Start GPS: 36 11' 50.51" N 95 50' 26.54" W
End GPS: 36 11' 50.50" N 95 50' 20.23" W

Run Speed (Avg, Max, Min):
Run 1 - 35.6, 39.2, 31.3 mph

Total Distance: 5+28.58

Date [Paved/Corrected]:
Run 1 - 7/5/2023 10:21:10 AM

Date Tested:
Run 1 - 7/6/2023 10:21:10 AM

File Modifications:
Run 1 - No Modifications Found

Project Parameters
Project Number: Oklahoma Certification
State: Oklahoma
Contractor: ESS
Pavement Type: Asphalt
Traffic Direction: NB
Highway: Tulsa Raceway Park
Number of Lanes: 1
Direction of Paving: WB
Operator: Kyle Frye

Calibration Settings
Distance: 314234 encoder counts in 528.0 ft
Track 1:
Height Sensor Type: RoLine 1145, Gocator 2342/1150/1350
Height Sensor Level Reading: 0.00 in.
Accelerometer Constant: 8334.95

Filter Settings
Filter Type: Butterworth
Filter Width: 11.000 ft
Filter Gain: 1.00

Scallop Parameters
Minimum Height: 0.030 in (Inclusive)
Minimum Length: 2.000 ft
Resolution: 0.010 in
Blanking Band: 0.000 in

Localized Roughness Settings
Simulated Profilograph Data Used for Defects Analysis
Excluding Defects Less than: 2.0 ft
Bump Height: 0.60 in
Bump Width: 25.00 ft

Summary - Run 1 - 2023 ODOT Truck EB Run 1 Track 1

Track 1

Segment	Station (ft)	Defects	Rough (in)	PRI (in/mi)
<u>1</u>	0+00.00	0	3.19	31.90
	5+28.00			
	0+00.00	0	3.19	31.90
	5+28.00			

No defects found for Run 1

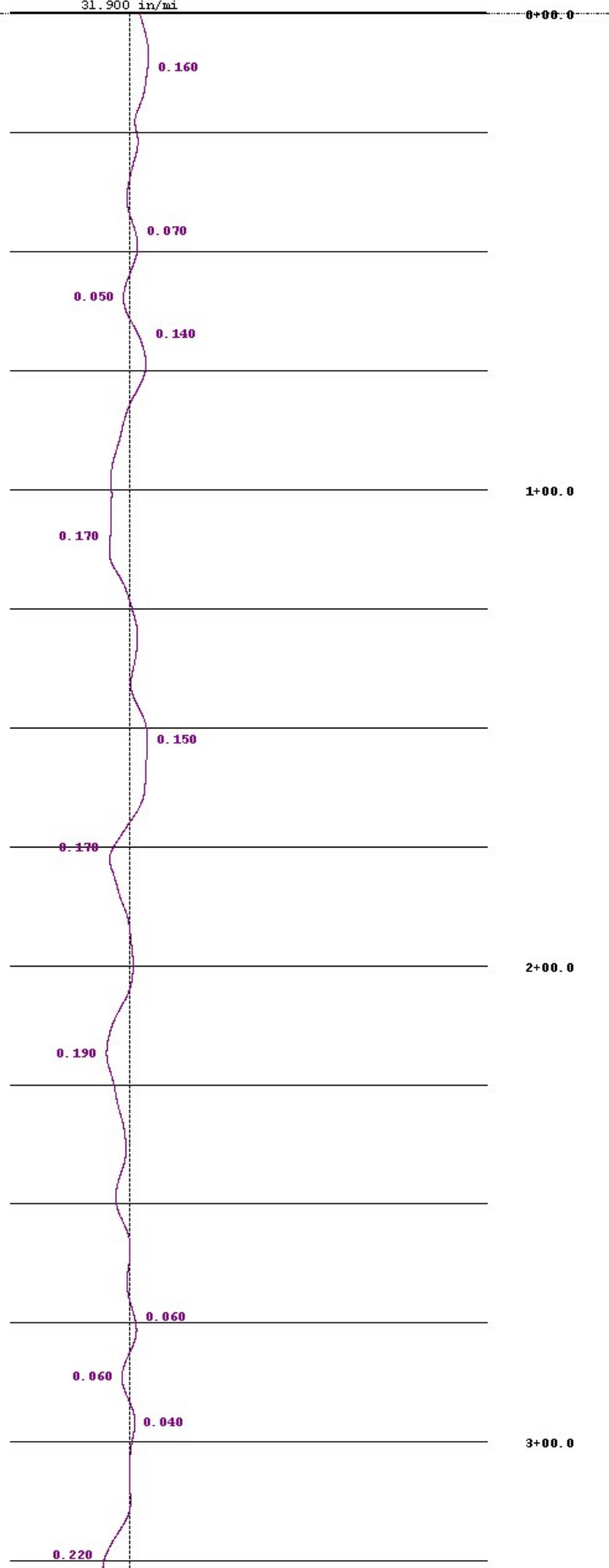
No user events found for Run 1

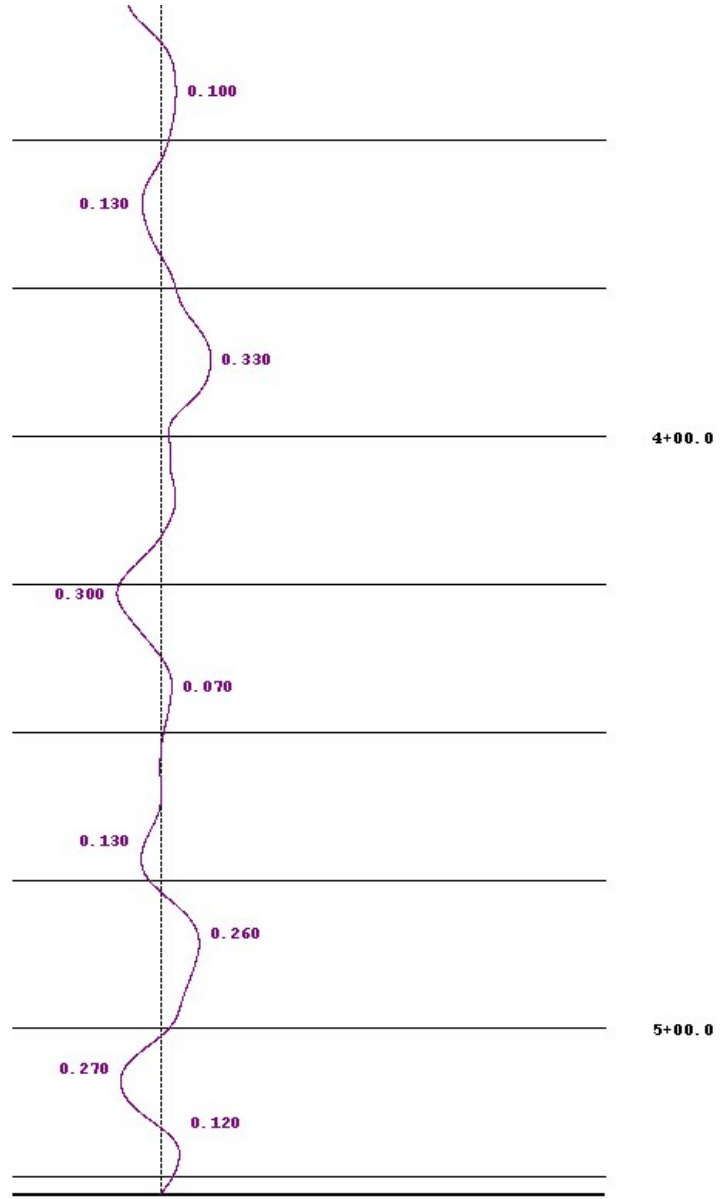
PRI:

Track 1
31.900 in/mi

0+00.0

Seg 1
0+00.0
5+28.0
528 ft
PRI 31.9





Notes - Track 1

1. Start Collection @ 0+00.00

2. End Collection @ 5+28.50

Data File: 20230706_EB_Truck_Run 1.rsd

Stations: Run 1 - 0+00.00 to 5+28.58
Start GPS: 36 11' 50.51" N 95 50' 26.54" W
End GPS: 36 11' 50.50" N 95 50' 20.23" W

Run Speed (Avg, Max, Min):
Run 1 - 35.6, 39.2, 31.3 mph

Total Distance: 5+28.58

Date [Paved/Corrected]:
Run 1 - 7/5/2023 10:21:10 AM

Date Tested:
Run 1 - 7/6/2023 10:21:10 AM

File Modifications:
Run 1 - No Modifications Found

Project Parameters
Project Number: Oklahoma Certification
State: Oklahoma
Contractor: ESS
Pavement Type: Asphalt
Traffic Direction: NB
Highway: Tulsa Raceway Park
Number of Lanes: 1
Direction of Paving: WB
Operator: Kyle Frye

Calibration Settings
Distance: 314234 encoder counts in 528.0 ft
Track 1:
Height Sensor Type: RoLine 1145, Gocator 2342/1150/1350
Height Sensor Level Reading: 0.00 in.
Accelerometer Constant: 8334.95

Filter Settings
Filter Type: Butterworth
Filter Width: 11.000 ft
Filter Gain: 1.00

Scallop Parameters
Minimum Height: 0.030 in (Inclusive)
Minimum Length: 2.000 ft
Resolution: 0.010 in
Blanking Band: 0.000 in

Localized Roughness Settings
Simulated Profilograph Data Used for Defects Analysis
Excluding Defects Less than: 2.0 ft
Bump Height: 0.60 in
Bump Width: 25.00 ft

Summary - Run 1 - 2023 ODOT Truck EB Run 1 Track 1				
Track 1				
Segment	Station (ft)	Defects	Rough (in)	PRI (in/mi)
<u>1</u>	0+00.00	0	3.19	31.90
	5+28.00			
	0+00.00	0	3.19	31.90
	5+28.00			

No defects found for Run 1

No user events found for Run 1

Certified by: _____

Title: _____

Organization: _____

Data File: 20230706_EB_Truck_Run 2.rsd

Stations: Run 1 - 0+00.00 to 5+28.67
Start GPS: 36 11' 50.50" N 95 50' 26.59" W
End GPS: 36 11' 50.48" N 95 50' 20.32" W

Run Speed (Avg, Max, Min):
Run 1 - 44.2, 46.7, 40.1 mph

Total Distance: 5+28.67

Date [Paved/Corrected]:
Run 1 - 7/5/2023 10:24:12 AM

Date Tested:
Run 1 - 7/6/2023 10:24:12 AM

File Modifications:
Run 1 - No Modifications Found

Project Parameters
Project Number: Oklahoma Certification
State: Oklahoma
Contractor: ESS
Pavement Type: Asphalt
Traffic Direction: NB
Highway: Tulsa Raceway Park
Number of Lanes: 1
Direction of Paving: WB
Operator: Kyle Frye

Calibration Settings
Distance: 314234 encoder counts in 528.0 ft
Track 1:
Height Sensor Type: RoLine 1145, Gocator 2342/1150/1350
Height Sensor Level Reading: 0.00 in.
Accelerometer Constant: 8334.95

Filter Settings
Filter Type: Butterworth
Filter Width: 11.000 ft
Filter Gain: 1.00

Scallop Parameters
Minimum Height: 0.030 in (Inclusive)
Minimum Length: 2.000 ft
Resolution: 0.010 in
Blanking Band: 0.000 in

Localized Roughness Settings
Simulated Profilograph Data Used for Defects Analysis
Excluding Defects Less than: 2.0 ft
Bump Height: 0.60 in
Bump Width: 25.00 ft

Summary - Run 1 - EB ODOT 2023 Run 2 Track 1

Track 1

Segment	Station (ft)	Defects	Rough (in)	PRI (in/mi)
<u>1</u>	0+00.00	0	3.19	31.90
	5+28.00			
	0+00.00	0	3.19	31.90
	5+28.00			

No defects found for Run 1

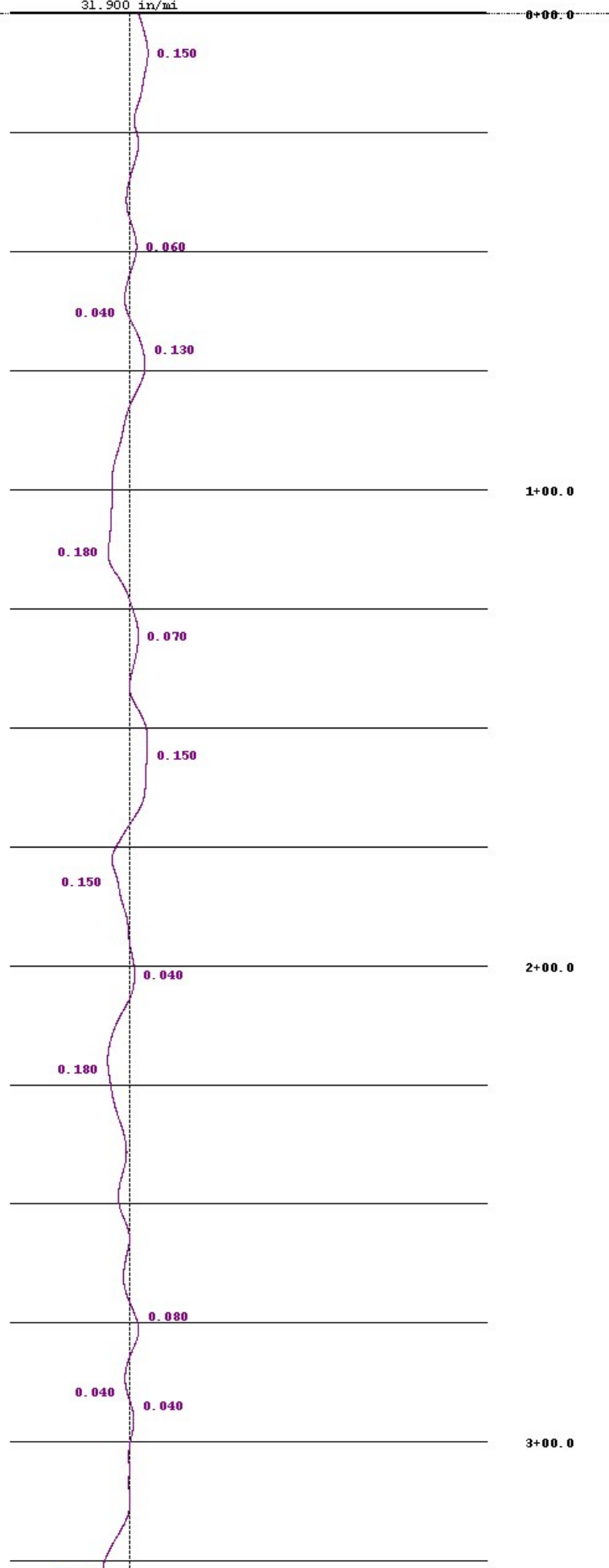
No user events found for Run 1

PRI:

Track 1
31.900 in/mi

0+00.0

Seg 1
0+00.0
5+28.0
528 ft
PRI 31.9



0.150

0.060

0.040

0.130

1+00.0

0.180

0.070

0.150

0.150

2+00.0

0.040

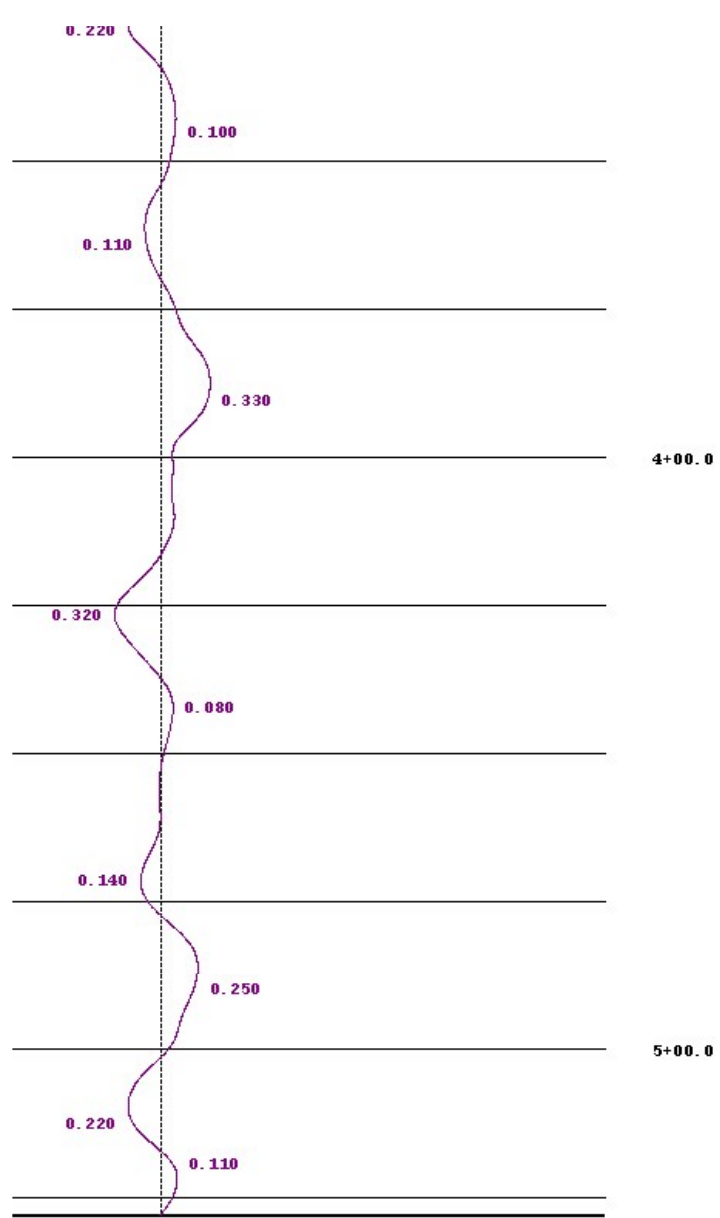
0.180

0.080

0.040

0.040

3+00.0



Notes - Track 1

1. Start Collection @ 0+00.00

2. End Collection @ 5+28.58

Data File: 20230706_EB_Truck_Run 2.rsd

Stations: Run 1 - 0+00.00 to 5+28.67
Start GPS: 36 11' 50.50" N 95 50' 26.59" W
End GPS: 36 11' 50.48" N 95 50' 20.32" W

Run Speed (Avg, Max, Min):
Run 1 - 44.2, 46.7, 40.1 mph

Total Distance: 5+28.67

Date [Paved/Corrected]:
Run 1 - 7/5/2023 10:24:12 AM

Date Tested:
Run 1 - 7/6/2023 10:24:12 AM

File Modifications:
Run 1 - No Modifications Found

Project Parameters
Project Number: Oklahoma Certification
State: Oklahoma
Contractor: ESS
Pavement Type: Asphalt
Traffic Direction: NB
Highway: Tulsa Raceway Park
Number of Lanes: 1
Direction of Paving: WB
Operator: Kyle Frye

Calibration Settings
Distance: 314234 encoder counts in 528.0 ft
Track 1:
Height Sensor Type: RoLine 1145, Gocator 2342/1150/1350
Height Sensor Level Reading: 0.00 in.
Accelerometer Constant: 8334.95

Filter Settings
Filter Type: Butterworth
Filter Width: 11.000 ft
Filter Gain: 1.00

Scallop Parameters
Minimum Height: 0.030 in (Inclusive)
Minimum Length: 2.000 ft
Resolution: 0.010 in
Blanking Band: 0.000 in

Localized Roughness Settings
Simulated Profilograph Data Used for Defects Analysis
Excluding Defects Less than: 2.0 ft
Bump Height: 0.60 in
Bump Width: 25.00 ft

Summary - Run 1 - EB ODOT 2023 Run 2 Track 1				
Track 1				
Segment	Station (ft)	Defects	Rough (in)	PRI (in/mi)
<u>1</u>	0+00.00 5+28.00	0	3.19	31.90
	0+00.00 5+28.00	0	3.19	31.90

No defects found for Run 1

No user events found for Run 1

Certified by: _____

Title: _____

Organization: _____

Data File: 20230706_EB_Truck_Run 3.rsd

Stations: Run 1 - 0+00.00 to 5+29.08
Start GPS: 36 11' 50.52" N 95 50' 26.56" W
End GPS: 36 11' 50.50" N 95 50' 20.32" W

Run Speed (Avg, Max, Min):
Run 1 - 45, 47.5, 40.1 mph

Total Distance: 5+29.08

Date [Paved/Corrected]:
Run 1 - 7/5/2023 10:28:01 AM

Date Tested:
Run 1 - 7/6/2023 10:28:01 AM

File Modifications:
Run 1 - No Modifications Found

Project Parameters
Project Number: Oklahoma Certification
State: Oklahoma
Contractor: ESS
Pavement Type: Asphalt
Traffic Direction: NB
Highway: Tulsa Raceway Park
Number of Lanes: 1
Direction of Paving: WB
Operator: Kyle Frye

Calibration Settings
Distance: 314234 encoder counts in 528.0 ft
Track 1:
Height Sensor Type: RoLine 1145, Gocator 2342/1150/1350
Height Sensor Level Reading: 0.00 in.
Accelerometer Constant: 8334.95

Filter Settings
Filter Type: Butterworth
Filter Width: 11.000 ft
Filter Gain: 1.00

Scallop Parameters
Minimum Height: 0.030 in (Inclusive)
Minimum Length: 2.000 ft
Resolution: 0.010 in
Blanking Band: 0.000 in

Localized Roughness Settings
Simulated Profilograph Data Used for Defects Analysis
Excluding Defects Less than: 2.0 ft
Bump Height: 0.60 in
Bump Width: 25.00 ft

Summary - Run 1 - 2023 EB Run 3 Track 1

Track 1

Segment	Station (ft)	Defects	Rough (in)	PRI (in/mi)
<u>1</u>	0+00.00	0	3.22	32.20
	5+28.00			
	0+00.00	0	3.22	32.20
	5+28.00			

No defects found for Run 1

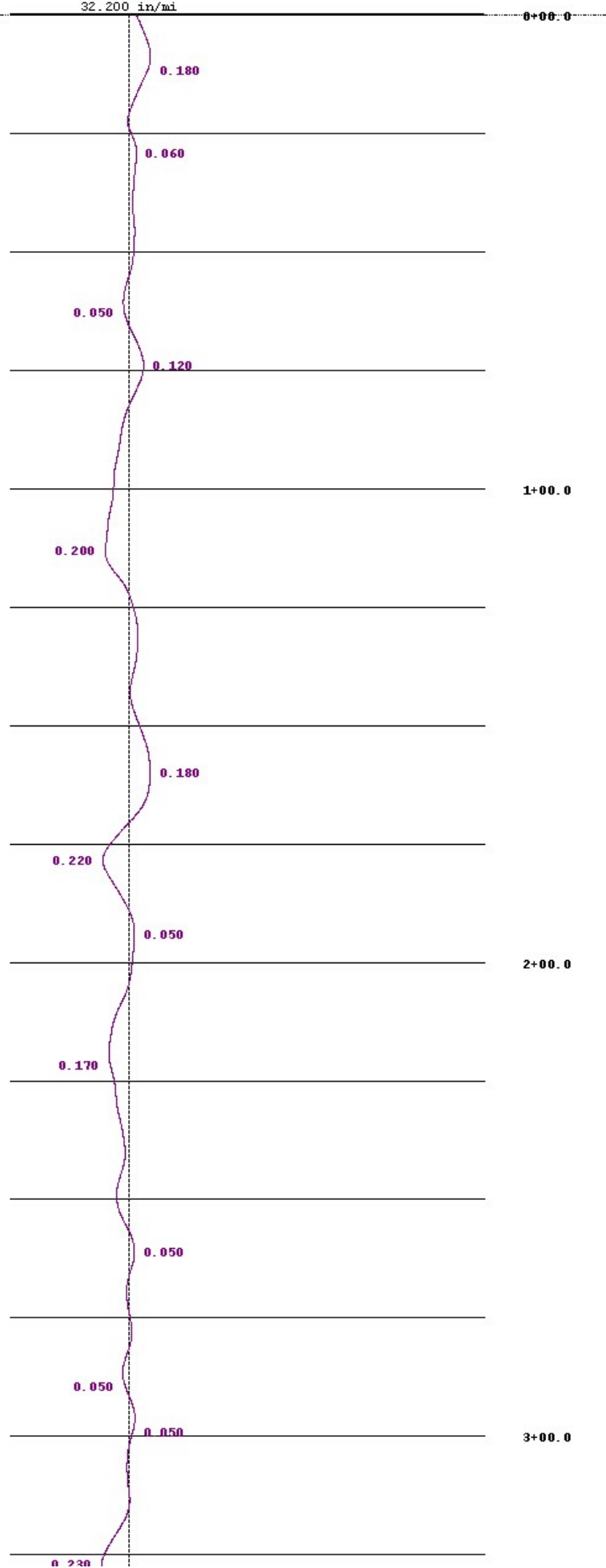
No user events found for Run 1

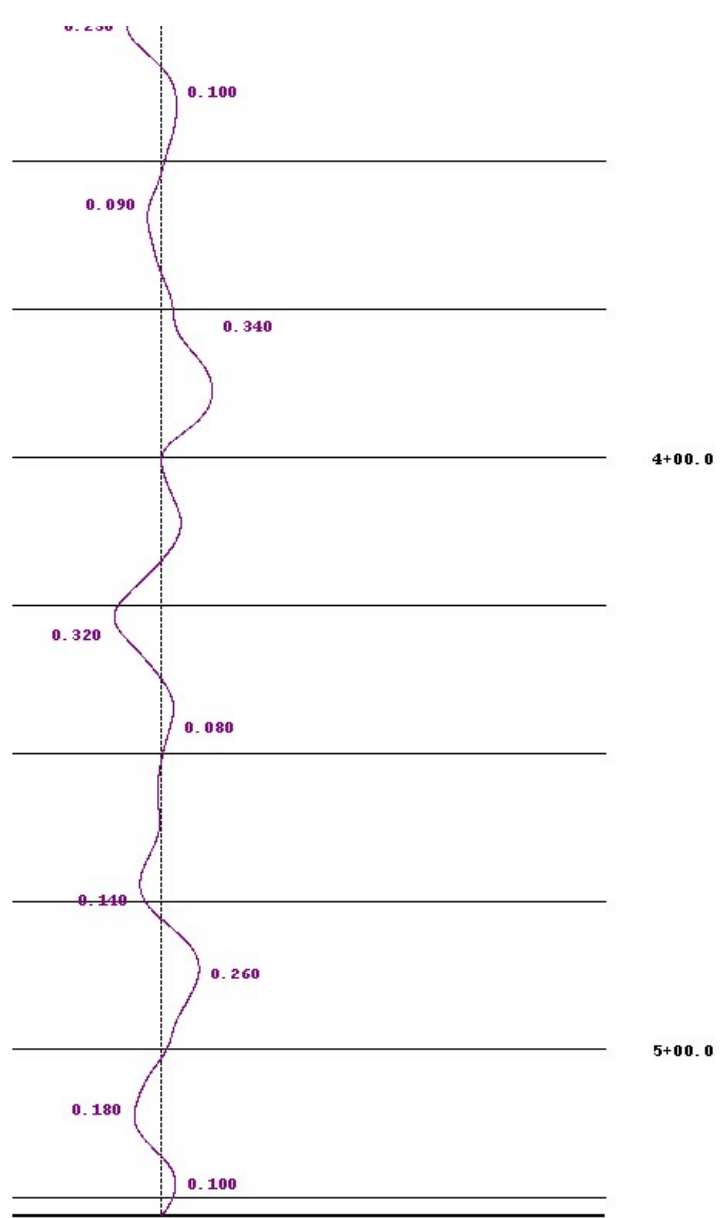
PRI:

Track 1
32.200 in/mi

0+00.0

Seg 1
0+00.0
5+28.0
528 ft
PRI 32.2





Notes - Track 1

1. Start Collection @ 0+00.00

2. End Collection @ 5+29.00

Data File: 20230706_EB_Truck_Run 3.rsd

Stations: Run 1 - 0+00.00 to 5+29.08
Start GPS: 36 11' 50.52" N 95 50' 26.56" W
End GPS: 36 11' 50.50" N 95 50' 20.32" W

Run Speed (Avg, Max, Min):
Run 1 - 45, 47.5, 40.1 mph

Total Distance: 5+29.08

Date [Paved/Corrected]:
Run 1 - 7/5/2023 10:28:01 AM

Date Tested:
Run 1 - 7/6/2023 10:28:01 AM

File Modifications:
Run 1 - No Modifications Found

Project Parameters
Project Number: Oklahoma Certification
State: Oklahoma
Contractor: ESS
Pavement Type: Asphalt
Traffic Direction: NB
Highway: Tulsa Raceway Park
Number of Lanes: 1
Direction of Paving: WB
Operator: Kyle Frye

Calibration Settings
Distance: 314234 encoder counts in 528.0 ft
Track 1:
Height Sensor Type: RoLine 1145, Gocator 2342/1150/1350
Height Sensor Level Reading: 0.00 in.
Accelerometer Constant: 8334.95

Filter Settings
Filter Type: Butterworth
Filter Width: 11.000 ft
Filter Gain: 1.00

Scallop Parameters
Minimum Height: 0.030 in (Inclusive)
Minimum Length: 2.000 ft
Resolution: 0.010 in
Blanking Band: 0.000 in

Localized Roughness Settings
Simulated Profilograph Data Used for Defects Analysis
Excluding Defects Less than: 2.0 ft
Bump Height: 0.60 in
Bump Width: 25.00 ft

Summary - Run 1 - 2023 EB Run 3 Track 1				
Track 1				
Segment	Station (ft)	Defects	Rough (in)	PRI (in/mi)
<u>1</u>	0+00.00 5+28.00	0	3.22	32.20
	0+00.00 5+28.00	0	3.22	32.20

No defects found for Run 1

No user events found for Run 1

Certified by: _____

Title: _____

Organization: _____

Data File: 20230706_WB_Truck_Run 1.rsd

Stations: Run 1 - 0+00.00 to 5+28.58
Start GPS: 36 11' 50.71" N 95 50' 13.56" W
End GPS: 36 11' 50.71" N 95 50' 19.78" W

Run Speed (Avg, Max, Min):
Run 1 - 47.4, 50.2, 43.6 mph

Total Distance: 5+28.58

Date [Paved/Corrected]:
Run 1 - 7/5/2023 10:26:27 AM

Date Tested:
Run 1 - 7/6/2023 10:26:27 AM

File Modifications:
Run 1 - No Modifications Found

Project Parameters
Project Number: Oklahoma Certification
State: Oklahoma
Contractor: ESS
Pavement Type: Asphalt
Traffic Direction: NB
Highway: Tulsa Raceway Park
Number of Lanes: 1
Direction of Paving: WB
Operator: Kyle Frye

Calibration Settings
Distance: 314234 encoder counts in 528.0 ft
Track 1:
Height Sensor Type: RoLine 1145, Gocator 2342/1150/1350
Height Sensor Level Reading: 0.00 in.
Accelerometer Constant: 8334.95

Filter Settings
Filter Type: Butterworth
Filter Width: 11.000 ft
Filter Gain: 1.00

Scallop Parameters
Minimum Height: 0.030 in (Inclusive)
Minimum Length: 2.000 ft
Resolution: 0.010 in
Blanking Band: 0.000 in

Localized Roughness Settings
Simulated Profilograph Data Used for Defects Analysis
Excluding Defects Less than: 2.0 ft
Bump Height: 0.60 in
Bump Width: 25.00 ft

Summary - Run 1 - 2023 ODOT WB Run 1 Track 1

Track 1

Segment	Station (ft)	Defects	Rough (in)	PRI (in/mi)
1	0+00.00	1	6.32	63.20
	5+28.00			
	0+00.00	1	6.32	63.20
	5+28.00			

Defect Locations - Run 1 - By Station

Defect	Type	Track	Segment	Start (ft)	End (ft)	Length (ft)	Peak Height (in)	Peak Station (ft)
1	Bump	1	1	0+65.50	0+73.08	7.6	0.68	0+69.08

Track 1 defects: 1
 Total defects: 1

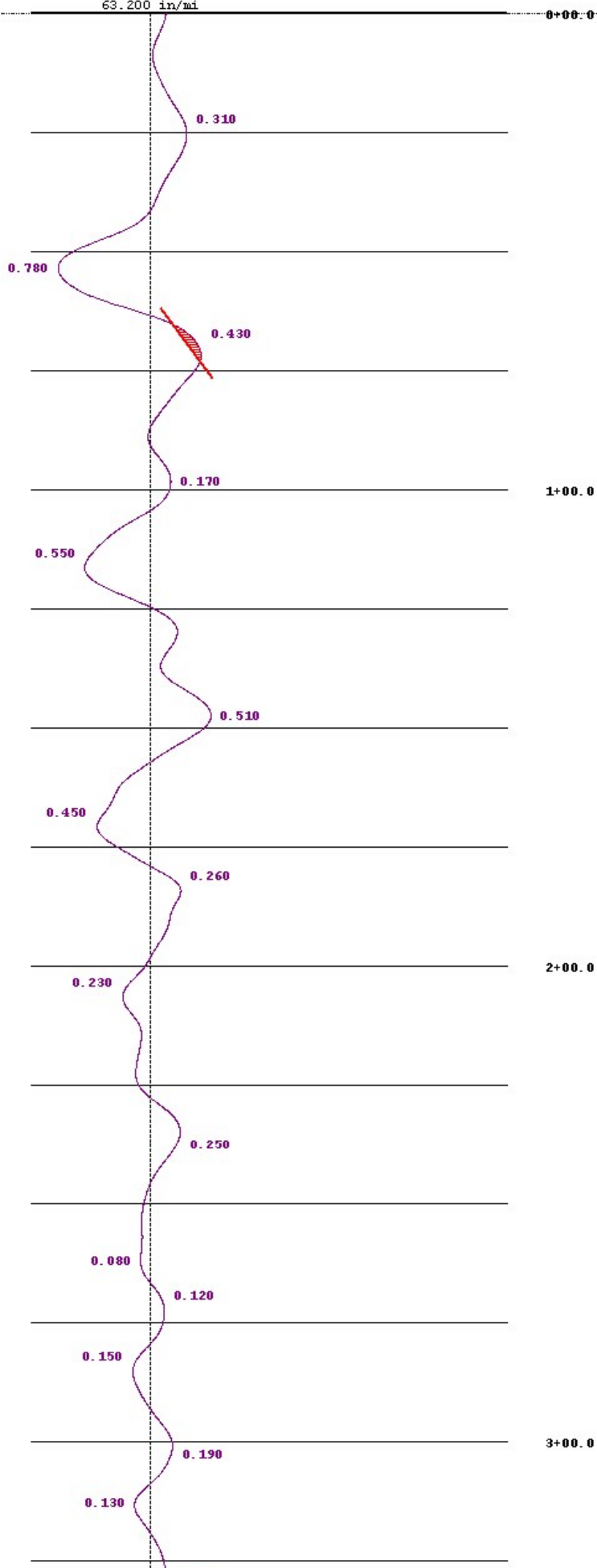
No user events found for Run 1

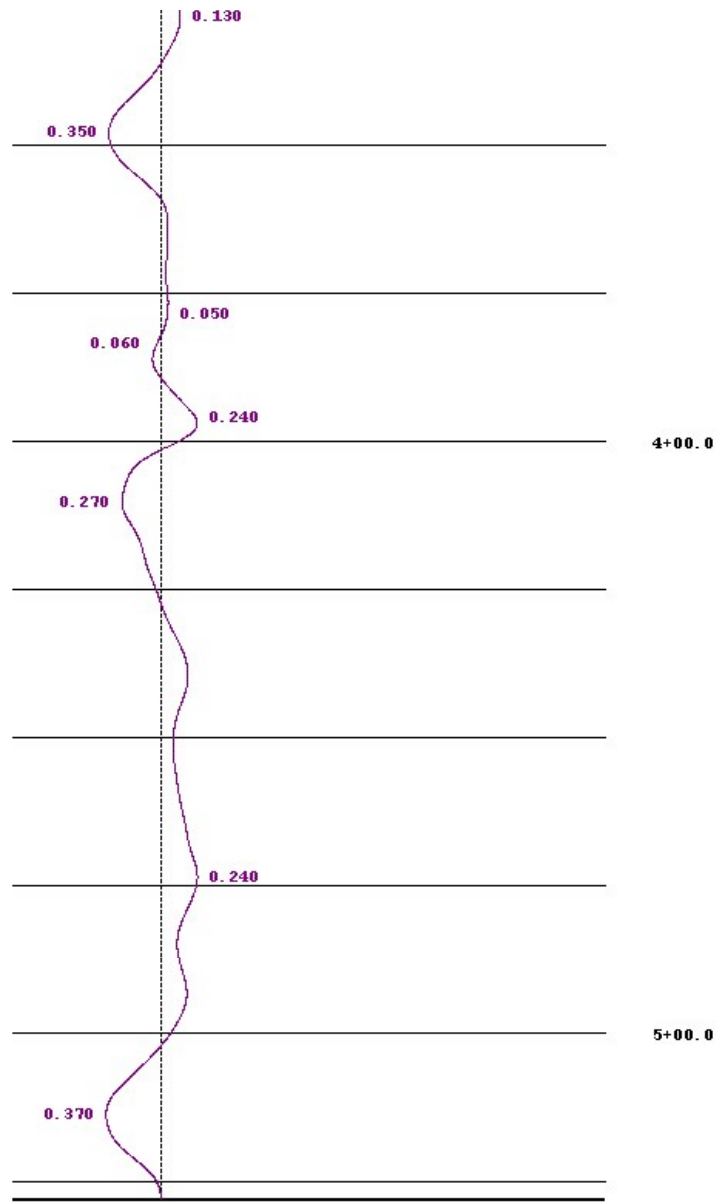
PRI:

Track 1
63.200 in/mi

0+00.0

Seg 1
0+00.0
5+28.0
528 ft
PRI 63.2





Notes - Track 1

1. Start Collection @ 0+00.00

2. End Collection @ 5+28.50

Data File: 20230706_WB_Truck_Run 1.rsd

Stations: Run 1 - 0+00.00 to 5+28.58
Start GPS: 36 11' 50.71" N 95 50' 13.56" W
End GPS: 36 11' 50.71" N 95 50' 19.78" W

Run Speed (Avg, Max, Min):
Run 1 - 47.4, 50.2, 43.6 mph

Total Distance: 5+28.58

Date [Paved/Corrected]:
Run 1 - 7/5/2023 10:26:27 AM

Date Tested:
Run 1 - 7/6/2023 10:26:27 AM

File Modifications:
Run 1 - No Modifications Found

Project Parameters
Project Number: Oklahoma Certification
State: Oklahoma
Contractor: ESS
Pavement Type: Asphalt
Traffic Direction: NB
Highway: Tulsa Raceway Park
Number of Lanes: 1
Direction of Paving: WB
Operator: Kyle Frye

Calibration Settings
Distance: 314234 encoder counts in 528.0 ft
Track 1:
Height Sensor Type: RoLine 1145, Gocator 2342/1150/1350
Height Sensor Level Reading: 0.00 in.
Accelerometer Constant: 8334.95

Filter Settings
Filter Type: Butterworth
Filter Width: 11.000 ft
Filter Gain: 1.00

Scallop Parameters
Minimum Height: 0.030 in (Inclusive)
Minimum Length: 2.000 ft
Resolution: 0.010 in
Blanking Band: 0.000 in

Localized Roughness Settings
Simulated Profilograph Data Used for Defects Analysis
Excluding Defects Less than: 2.0 ft
Bump Height: 0.60 in
Bump Width: 25.00 ft

Summary - Run 1 - 2023 ODOT WB Run 1 Track 1				
Track 1				
Segment	Station (ft)	Defects	Rough (in)	PRI (in/mi)
<u>1</u>	0+00.00 5+28.00	1	6.32	63.20
	0+00.00 5+28.00	1	6.32	63.20

Defect Locations - Run 1 - By Station								
Defect	Type	Track	Segment	Start (ft)	End (ft)	Length (ft)	Peak Height (in)	Peak Station (ft)
1	Bump	1	1	0+65.50	0+73.08	7.6	0.68	0+69.08

Track 1 defects: 1
Total defects: 1

No user events found for Run 1

Certified by: _____

Title: _____

Organization: _____

Data File: 20230706_WB_Truck_Run 2.rsd

Stations: Run 1 - 0+00.00 to 5+28.75
Start GPS: 36 11' 50.72" N 95 50' 13.55" W
End GPS: 36 11' 50.73" N 95 50' 19.78" W

Run Speed (Avg, Max, Min):
Run 1 - 47.1, 49.8, 41.1 mph

Total Distance: 5+28.75

Date [Paved/Corrected]:
Run 1 - 7/5/2023 10:29:38 AM

Date Tested:
Run 1 - 7/6/2023 10:29:38 AM

File Modifications:
Run 1 - No Modifications Found

Project Parameters
Project Number: Oklahoma Certification
State: Oklahoma
Contractor: ESS
Pavement Type: Asphalt
Traffic Direction: NB
Highway: Tulsa Raceway Park
Number of Lanes: 1
Direction of Paving: WB
Operator: Kyle Frye

Calibration Settings
Distance: 314234 encoder counts in 528.0 ft
Track 1:
Height Sensor Type: RoLine 1145, Gocator 2342/1150/1350
Height Sensor Level Reading: 0.00 in.
Accelerometer Constant: 8334.95

Filter Settings
Filter Type: Butterworth
Filter Width: 11.000 ft
Filter Gain: 1.00

Scallop Parameters
Minimum Height: 0.030 in (Inclusive)
Minimum Length: 2.000 ft
Resolution: 0.010 in
Blanking Band: 0.000 in

Localized Roughness Settings
Simulated Profilograph Data Used for Defects Analysis
Excluding Defects Less than: 2.0 ft
Bump Height: 0.60 in
Bump Width: 25.00 ft

Summary - Run 1 - 2023 ODOT WB Run 2 Track 1

Track 1

Segment	Station (ft)	Defects	Rough (in)	PRI (in/mi)
1	0+00.00	1	6.26	62.60
	5+28.00			
	0+00.00	1	6.26	62.60
	5+28.00			

Defect Locations - Run 1 - By Station

Defect	Type	Track	Segment	Start (ft)	End (ft)	Length (ft)	Peak Height (in)	Peak Station (ft)
1	Bump	1	1	0+66.00	0+73.25	7.3	0.67	0+69.42

Track 1 defects: 1
 Total defects: 1

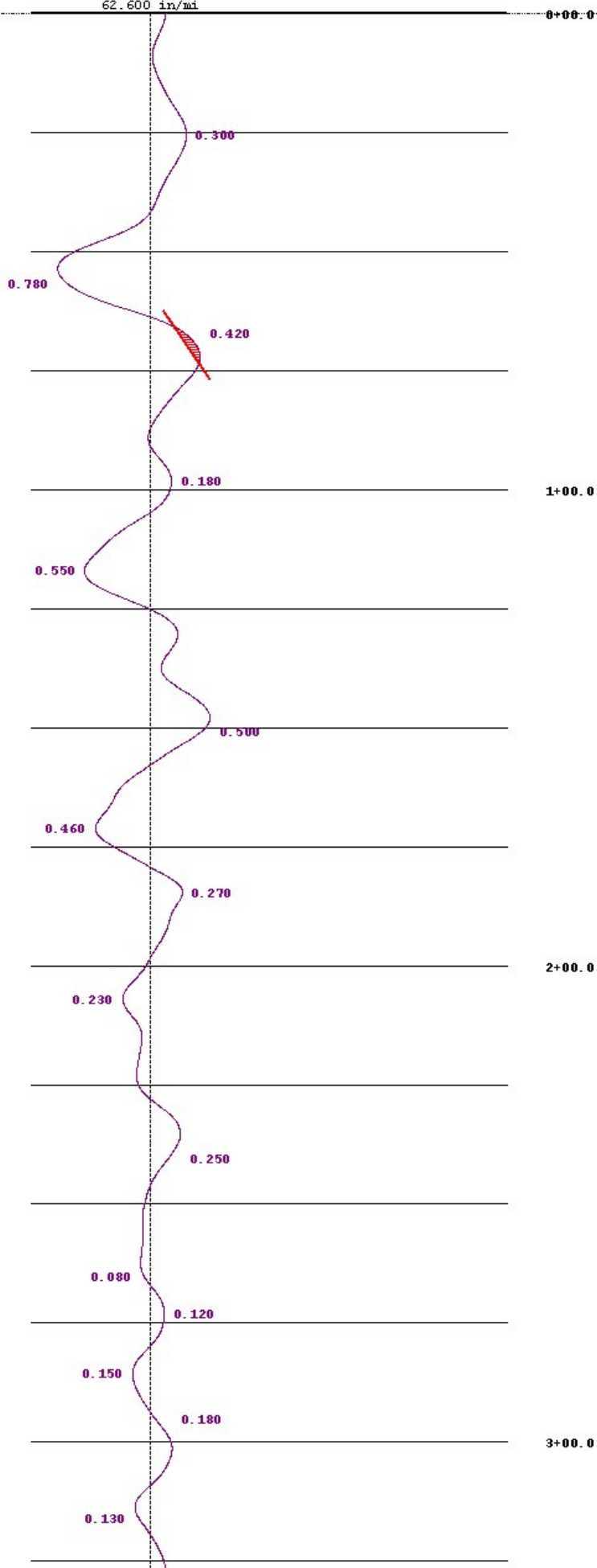
No user events found for Run 1

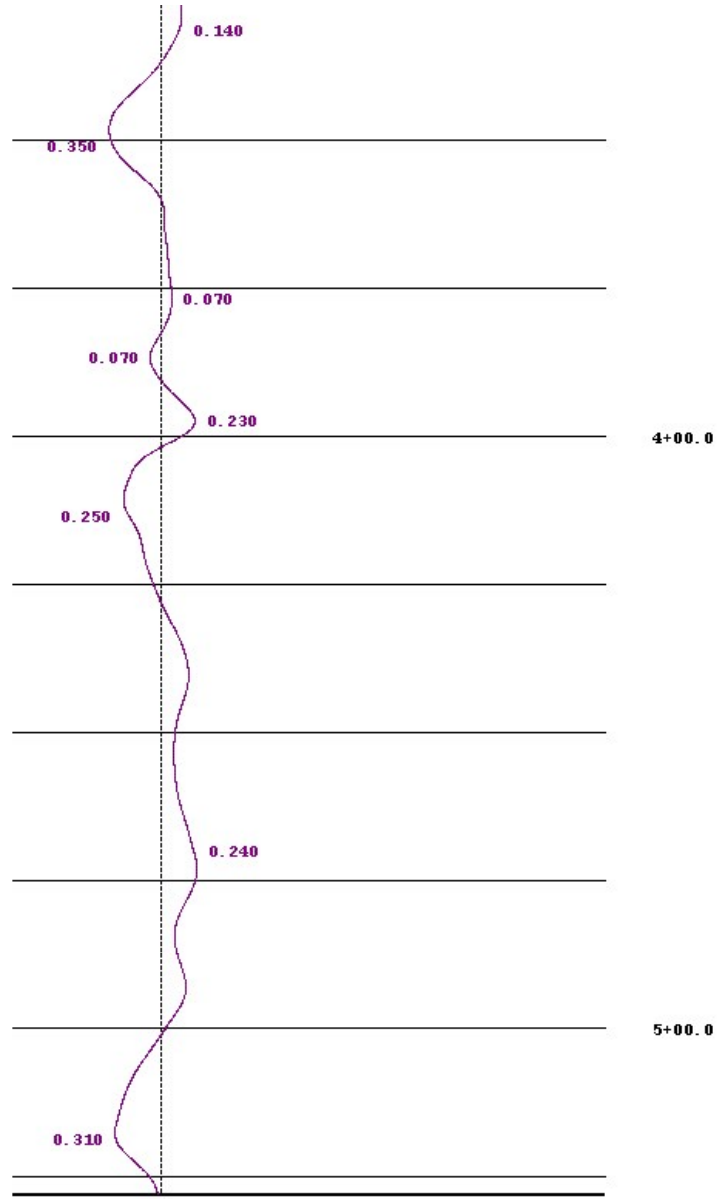
PRI:

Track 1
62.600 in/mi

0+00.0

Seg 1
0+00.0
5+28.0
528 ft
PRI 62.6





Notes - Track 1

1. Start Collection @ 0+00.00

2. End Collection @ 5+28.67

Data File: 20230706_WB_Truck_Run 2.rsd

Stations: Run 1 - 0+00.00 to 5+28.75
Start GPS: 36 11' 50.72" N 95 50' 13.55" W
End GPS: 36 11' 50.73" N 95 50' 19.78" W

Run Speed (Avg, Max, Min):
Run 1 - 47.1, 49.8, 41.1 mph

Total Distance: 5+28.75

Date [Paved/Corrected]:
Run 1 - 7/5/2023 10:29:38 AM

Date Tested:
Run 1 - 7/6/2023 10:29:38 AM

File Modifications:
Run 1 - No Modifications Found

Project Parameters
Project Number: Oklahoma Certification
State: Oklahoma
Contractor: ESS
Pavement Type: Asphalt
Traffic Direction: NB
Highway: Tulsa Raceway Park
Number of Lanes: 1
Direction of Paving: WB
Operator: Kyle Frye

Calibration Settings
Distance: 314234 encoder counts in 528.0 ft
Track 1:
Height Sensor Type: RoLine 1145, Gocator 2342/1150/1350
Height Sensor Level Reading: 0.00 in.
Accelerometer Constant: 8334.95

Filter Settings
Filter Type: Butterworth
Filter Width: 11.000 ft
Filter Gain: 1.00

Scallop Parameters
Minimum Height: 0.030 in (Inclusive)
Minimum Length: 2.000 ft
Resolution: 0.010 in
Blanking Band: 0.000 in

Localized Roughness Settings
Simulated Profilograph Data Used for Defects Analysis
Excluding Defects Less than: 2.0 ft
Bump Height: 0.60 in
Bump Width: 25.00 ft

Summary - Run 1 - 2023 ODOT WB Run 2 Track 1				
Track 1				
Segment	Station (ft)	Defects	Rough (in)	PRI (in/mi)
<u>1</u>	0+00.00	1	6.26	62.60
	5+28.00			
	0+00.00	1	6.26	62.60
	5+28.00			

Defect Locations - Run 1 - By Station								
Defect	Type	Track	Segment	Start (ft)	End (ft)	Length (ft)	Peak Height (in)	Peak Station (ft)
1	Bump	1	1	0+66.00	0+73.25	7.3	0.67	0+69.42

Track 1 defects: 1
Total defects: 1

No user events found for Run 1

Certified by: _____

Title: _____

Organization: _____

Data File: 20230706_WB_Truck_Run 3.rsd

Stations: Run 1 - 0+00.00 to 5+28.83
Start GPS: 36 11' 50.70" N 95 50' 13.54" W
End GPS: 36 11' 50.71" N 95 50' 19.76" W

Run Speed (Avg, Max, Min):
Run 1 - 46.6, 49.7, 41.3 mph

Total Distance: 5+28.83

Date [Paved/Corrected]:
Run 1 - 7/5/2023 10:32:51 AM

Date Tested:
Run 1 - 7/6/2023 10:32:51 AM

File Modifications:
Run 1 - No Modifications Found

Project Parameters
Project Number: Oklahoma Certification
State: Oklahoma
Contractor: ESS
Pavement Type: Asphalt
Traffic Direction: NB
Highway: Tulsa Raceway Park
Number of Lanes: 1
Direction of Paving: WB
Operator: Kyle Frye

Calibration Settings
Distance: 314234 encoder counts in 528.0 ft
Track 1:
Height Sensor Type: RoLine 1145, Gocator 2342/1150/1350
Height Sensor Level Reading: 0.00 in.
Accelerometer Constant: 8334.95

Filter Settings
Filter Type: Butterworth
Filter Width: 11.000 ft
Filter Gain: 1.00

Scallop Parameters
Minimum Height: 0.030 in (Inclusive)
Minimum Length: 2.000 ft
Resolution: 0.010 in
Blanking Band: 0.000 in

Localized Roughness Settings
Simulated Profilograph Data Used for Defects Analysis
Excluding Defects Less than: 2.0 ft
Bump Height: 0.60 in
Bump Width: 25.00 ft

Summary - Run 1 - 2023 ODOT WB Run 3 Track 1

Track 1

Segment	Station (ft)	Defects	Rough (in)	PRI (in/mi)
1	0+00.00	1	6.27	62.70
	5+28.00			
	0+00.00	1	6.27	62.70
	5+28.00			

Defect Locations - Run 1 - By Station

Defect	Type	Track	Segment	Start (ft)	End (ft)	Length (ft)	Peak Height (in)	Peak Station (ft)
1	Bump	1	1	0+65.42	0+73.42	8.0	0.69	0+69.17

Track 1 defects: 1
 Total defects: 1

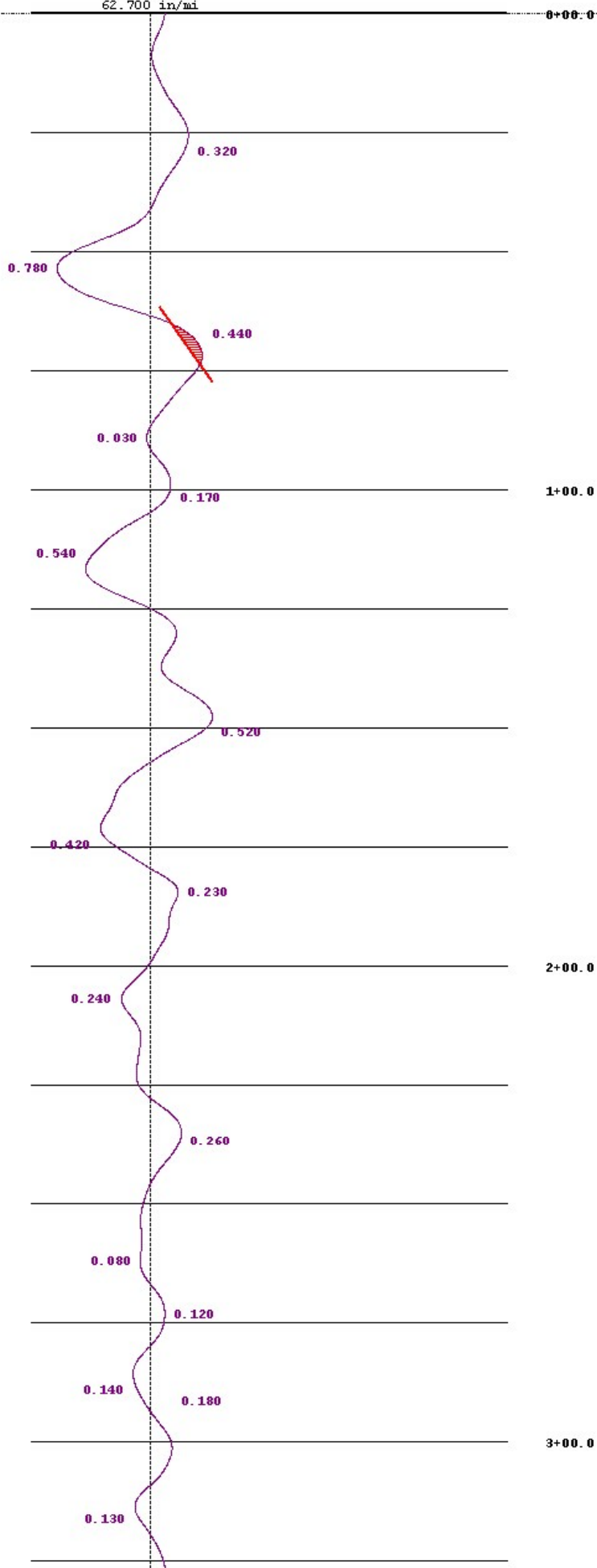
No user events found for Run 1

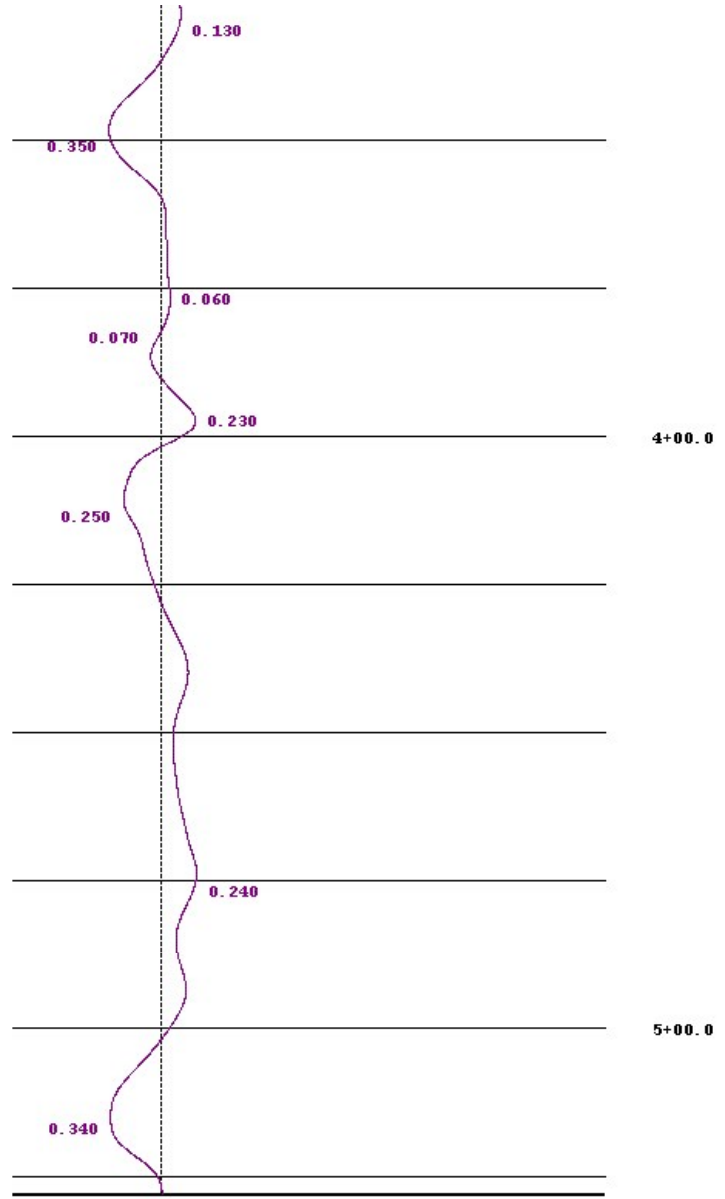
PRI:

Track 1
62.700 in/mi

0+00.0

Seg 1
0+00.0
5+28.0
528 ft
PRI 62.7





Notes - Track 1

1. Start Collection @ 0+00.00

2. End Collection @ 5+28.75

Data File: 20230706_WB_Truck_Run 3.rsd

Stations: Run 1 - 0+00.00 to 5+28.83
Start GPS: 36 11' 50.70" N 95 50' 13.54" W
End GPS: 36 11' 50.71" N 95 50' 19.76" W

Run Speed (Avg, Max, Min):
Run 1 - 46.6, 49.7, 41.3 mph

Total Distance: 5+28.83

Date [Paved/Corrected]:
Run 1 - 7/5/2023 10:32:51 AM

Date Tested:
Run 1 - 7/6/2023 10:32:51 AM

File Modifications:
Run 1 - No Modifications Found

Project Parameters
Project Number: Oklahoma Certification
State: Oklahoma
Contractor: ESS
Pavement Type: Asphalt
Traffic Direction: NB
Highway: Tulsa Raceway Park
Number of Lanes: 1
Direction of Paving: WB
Operator: Kyle Frye

Calibration Settings
Distance: 314234 encoder counts in 528.0 ft
Track 1:
Height Sensor Type: RoLine 1145, Gocator 2342/1150/1350
Height Sensor Level Reading: 0.00 in.
Accelerometer Constant: 8334.95

Filter Settings
Filter Type: Butterworth
Filter Width: 11.000 ft
Filter Gain: 1.00

Scallop Parameters
Minimum Height: 0.030 in (Inclusive)
Minimum Length: 2.000 ft
Resolution: 0.010 in
Blanking Band: 0.000 in

Localized Roughness Settings
Simulated Profilograph Data Used for Defects Analysis
Excluding Defects Less than: 2.0 ft
Bump Height: 0.60 in
Bump Width: 25.00 ft

Summary - Run 1 - 2023 ODOT WB Run 3 Track 1				
Track 1				
Segment	Station (ft)	Defects	Rough (in)	PRI (in/mi)
<u>1</u>	0+00.00 5+28.00	1	6.27	62.70
	0+00.00 5+28.00	1	6.27	62.70

Defect Locations - Run 1 - By Station								
Defect	Type	Track	Segment	Start (ft)	End (ft)	Length (ft)	Peak Height (in)	Peak Station (ft)
1	Bump	1	1	0+65.42	0+73.42	8.0	0.69	0+69.17

Track 1 defects: 1
Total defects: 1

No user events found for Run 1

Certified by: _____

Title: _____

Organization: _____